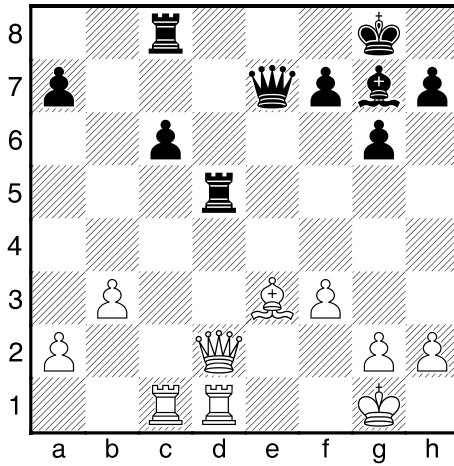


Match 1, Game 4



Fischer

You

After 19...♖d8×(♘)d5

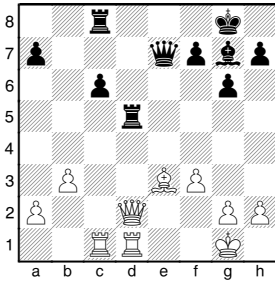
4 - 1 How do you evaluate the position?

A	White is Significantly Better / Winning
B	Nearly Equal
C	Black is Better
D	Black is Significantly Better / Winning

4 - 2 How would you respond? Why?

A	19. ♔d2-e2
B	19. ♔d2-f2
C	19. ♔d2×d5
D	19. ♕e3-g5

(4) Blau, Max - Fischer, Robert , Zürich , 1959



After 19...♖d8(♘)d5

1 - 2	Score	%	Match
B - B	10	59%	½
A - C		16%	
C - B	6	9%	½
C - A	1	8%	
B - D		2%	
C - C		2%	
B - A	1	1%	
Other		3%	

Fischer	
---------	--

You	
-----	--

Other selections: (A-B), (D-B) – (S=1, M= ½)

Quick observations: Fischer recaptured your ♘ and created tension in the position. Your ♔ is threatened and your options are limited, since the ♔ is the sole defender of the ♕. Capturing on d5 should be considered as the c6-♖ is pinned.

Summary: The threat to your ♔ must be addressed at once!

The first option you must check is the most forcing one – 20.♔×d5 (2-C). It looks promising at first – 20...♖×d5?? 21.♖×c8+ ♕f8 22.♕h6+--. Sadly, Fischer could capture the now defenseless ♕ with the check before grabbing the ♔. After 20...♔×e3+! 21.♖f1 ♖×d5 21.♖×c8+ ♕f8, it is Black who is winning.

Another aggressive move 20.♕g5?? (2-D) is also a mistake. After 20...♖×g5+-, Black wins a piece.

Finally, you have two defensive moves. Weak is 20.♔e2? (2-A), setting yourself up for the deadly pin along the e-file. Black can pile up on the ♕ and, eventually, win it, e.g. 20...♖e8 21.♖e1 ♖e5 22.♖f2 ♕h6 23.♖c3 ♕×e3 24.♖×e3 ♔h4+ 25.♖f1 ♖×e3+-.

This leaves you with the modest yet sufficient 20.♔f2= (2-B). You save the ♔ and the ♕ without any positional concessions. The position is nearly equal. Both sides have some small plusses. You have a slightly better ♖-structure on the ♔-side, while Fischer’s ♗-side ♖s are preferable. Your “partner” Blau played this move, and the game was drawn after 20...♔d7 21.♖×d5 ♖×d5 22.♖×c8+ ♔×c8 23.♔d2.



A simple position often calls for a simple solution. The key is to recognize the simplicity.