

## Chess Exam Matches: You vs. Fischer, Bonus Match

In this document you will find 12 instructive positions from the games of the 11<sup>th</sup> Chess World Champion Robert J. Fischer. These positions were among the finalists to be included in my new book *Chess Exam Matches against Chess Legends: You vs. Fischer*, but didn't make the final cut due to book's page count limitations.

I hope you have read the book and found it entertaining and enlightening. In either case, in this document you have a stand-alone product that you are welcome to enjoy.

The Bonus Match consists of:

- 12 'games' questions
- Score to Rating conversion Table

Free Demo version includes two of 12 "games"; one of them has a complete answer shown ([game 12, #72](#)). Upgraded version includes all 12 "games", all 12 answers and a rating table. Also included is an Excel tool to help you calculate the rating.

Upgrade costs [\\$5.95](#). Pay via PayPal - click [\\$5.95](#) or here [https://www.paypal.com/xclick/business=orders@iamcoach.com&item\\_name=ExamF+Excel+Bonus+PDF&amount=5.95](https://www.paypal.com/xclick/business=orders@iamcoach.com&item_name=ExamF+Excel+Bonus+PDF&amount=5.95) if clicking fails, copy and paste this text into Internet Explorer or send money to [orders@iamcoach.com](mailto:orders@iamcoach.com)

or send me a check to

**Igor Khmel'nitsky**  
**PO Box 60088**  
**King of Prussia, PA 19406**

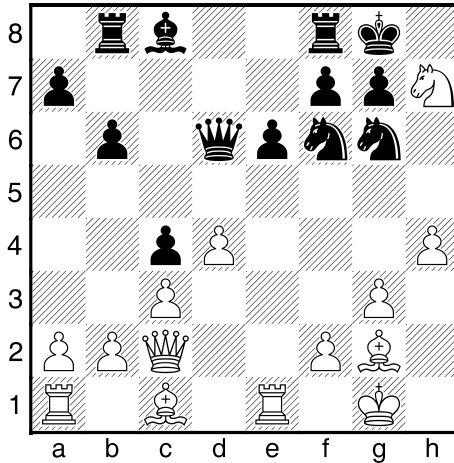
If you have any questions or comments, please contact me via this form: <http://www.chessexam.com/Exam/Forms/Form-BookReader.htm>

Enjoy!

Igor Khmel'nitsky

<p>This entire file is copyrighted and can't be posted on the website, in printed form, send to another person or violated this copyright in any other way.</p>
---

**Bonus Match, Game 61**



You

Fischer

After 18. ♖g5×(♙)h7

**61 - 1 How do you evaluate the position?**

A	White is Significantly Better / Winning
B	White is Better
C	Nearly Equal
D	Black is Significantly Better / Winning

**61 - 2 How would you respond? Why?**

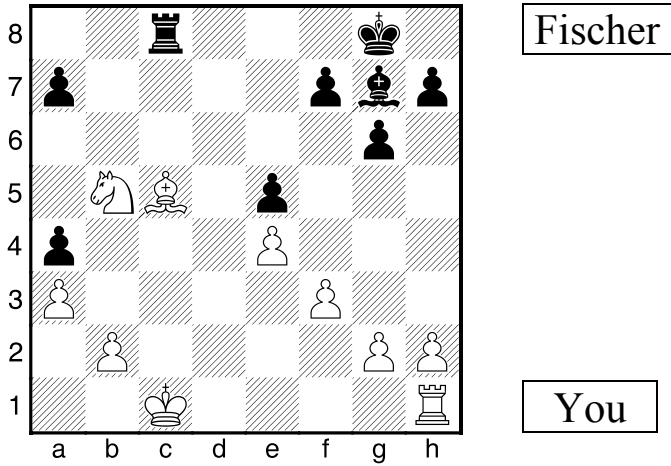
A	18... ♖f6×h7
B	18... ♔g8×h7
C	18... ♚d6-e7
D	18... ♞g6×h4

.....

Games 62-71 are not shown in this  
Demo

.....

**Bonus Match, Game 72**



**After 25...♖a8-c8**

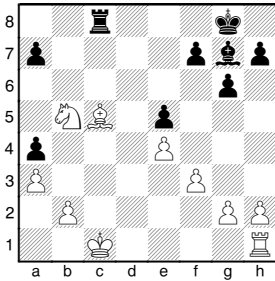
**72 - 1 How do you evaluate the position?**

A	White is Significantly Better / Winning
B	White is Better
C	Nearly Equal
D	Black is Better

**72 - 2 How would you respond? Why?**

A	26. ♖b2-b4
B	26. ♘b5xa7
C	26. ♘b5-c3
D	26. ♖h1-d1

**(72) Fuster,Geza - Fischer,Robert**, Portoroz (Intz), 1958



After 25...Ra8-c8

1 - 2	Score	%	Match
B - D	10	26%	<b>1</b>
B - C	10	21%	<b>1</b>
A - C	9	13%	<b>1</b>
A - D	9	9%	<b>1</b>
C - C	4	8%	½
C - D	4	7%	½
C - A		6%	

Fischer	
---------	--

You	
-----	--

Other selections: (A-B), (B-B), (C-B), (D-C), (D-D) – (S=1, M=½)

**Quick observations:** You have an extra ♖, but the c5-♙ can't be saved. Still, you have better ♖-structure and may soon be able to win one or both ♖s on the a-file. Fischer's ♙g7 has limited scope and no real targets. His ♔ can't support the weak ♖s on the ♙-side. You can capture the a7-♖ at once, but your ♗ may be in a peculiar position on a7.

**Summary:** assess the capture on a7 first. If you have doubts about it, consider just consolidating your pieces.

It is natural to try and preserve the extra ♙, but... The only excuse for playing 26.♖b4 (2-A) here is that you completely forgot about en passant. After 26...♖x♖3e.p., Black will soon get the ♙ anyway, while he also has solved the problem of the weak a4-♖.

The direct 26.♗x♗a7 (2-B) does give you a material advantage. However, after 26...♖x♖c5+ 27.♙b1 ♙h6±, all White pieces are poorly placed. It would take several moves for White to free his ♗ (e.g. ♖e1-♖e2-♖c2), giving Black time to activate his ♔ and getting counter play on the ♙-side. Hence, I would prefer to pass on the a7-♖.

The remaining two moves are very similar and, likely would lead to the same position: 26.♗c3 ♖x♖c5 (2-C) 27.♖d1± or 26.♖d1 (2-D) ♖x♖c5+ 27.♗c3±. I prefer 26.Nc3, as it forces Black to capture the ♙, but you get the same score. I feel that White has a steady advantage with no risk. If you picked 26.♗c3, but didn't plan to get the ♖ to d1 anytime soon. Then you lose some points – (A-C) or (B-C) – (S=7, M=½). Practice this endgame against a friend of computer.



*When you have permanent advantages consider a solid positional approach rather than going into murky waters.*

### **Rating Report: Bonus Match**

From **Table Bonus**, get your rating by matching your score. If your score happens to be between the points in the table, approximate your rating by “eyeballing” or by using basic interpolation.

Table Bonus: *Score to Rating Conversion*

<b>Score</b>	<b>Rating</b>	<b>Score</b>	<b>Rating</b>
6	Demo	66	Demo
12	Demo	72	Demo
18	Demo	78	Demo
24	Demo	84	Demo
30	Demo	90	Demo
36	Demo	96	Demo
42	Demo	102	Demo
48	Demo	108	Demo
54	Demo	114	Demo
60	Demo	120	Demo

**Example:** User’s Score is **80**; User Rating is approximately **DEMO**, or, using interpolation, is estimated at **DEMO** [=demo + (demo – demo) \* (80 – 78) / (84 – 78)]

### **Bonus Match Result**

You	
Fischer	

<p>Get the complete <b>Chess Exam Matches against Chess Legends: You vs. Bobby Fischer</b> <a href="http://www.ChessExam.com">http://www.ChessExam.com</a></p>	
--	---