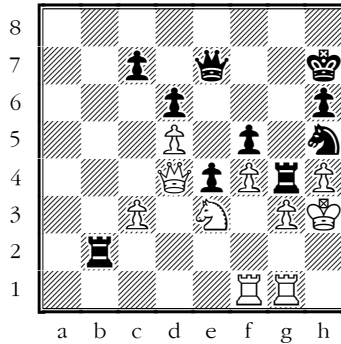


Test Yourself!

A. Hunt (2388) – Galdunts (2473)
 Gold Coast Open (9), 15.06.2000



World Chess News

London Chess Classic

It was another exiting day in London, with three decisive games and a very interesting draw between the players who are No 1 and No 2 on the live rating list. You can see that game in our Annotated Game section.

Round 5 results:

Aronian – Carlsen ½-½
 Nakamura – Howell 1-0
 Kramnik – Adams 1-0
 Short – Anand 0-1
 McShane – bye

Standings after 5 rounds:

1. Nakamura – 10/15,
 2. Carlsen – 9/15,
 3-4. Kramnik and McShane – 8/12,
 5-6. Anand and Aronian – 5/12,
 7. Short – 3/12,
 8-9. Adams and Howell – 2/15

[Official website](#)



This issue is prepared by GM Alex Baburin; technical editor: GM Alex Baburin
 Subscription is 15 euro for 3 months. For further details please refer to <http://www.chesstoday.net>
 CT-342(4048) Page 1 of 3

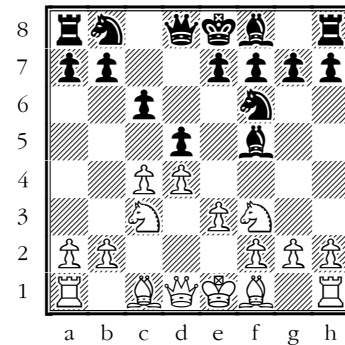
Annotated Game

by GM Alex Baburin

Aronian (2802) – Carlsen (2826)

3rd London Classic (5), 08.12.2011
The Slav Defence; D12

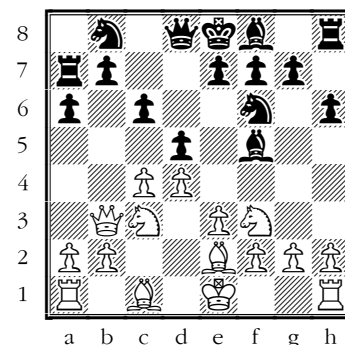
1. ♘f3 d5 2. d4 ♘f6 3. c4 c6 4. e3 ♕f5
 5. ♘c3 (D)



This position is very popular in top tournaments nowadays – Magnus himself won a nice game in this line with White (against Boris Gelfand in Moscow). After 5...e6 White usually plays 6. ♘h4, hunting down Black's light-squared bishop and getting a bishop pair. Black's next move is designed to prevent this.

5...a6 Black can afford a waiting move, which could be useful later. This is the advantage of having a solid pawn centre.

6. ♕e2 h6 7. ♖b3 ♜a7 (D)

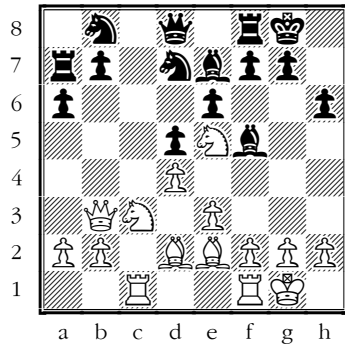


A couple of weeks ago I played a similar position with White, against IM Alex Lopez. I annotated that game in CT and my impression was that it was hard for White to get an edge in this line.

8.cxd5

I played c4-c5 later in that game, but got nowhere. Aronian's plan leads to a nearly symmetrical pawn structure, in which White might have some initiative initially, but developing it won't be easy.

8...cxd5 9.♔d2 e6 10.♘e5 ♕e7 11.♖c1 0-0 12.0-0 ♘fd7 (D)



This is a standard move in similar positions – if Black later takes on e5, then he won't have a piece on f6 which would come under attack.

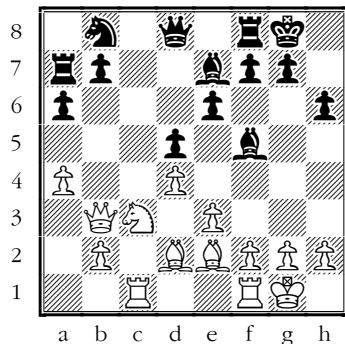
13.♘xd7 GM Landa, commenting on this game at www.chesspro.ru, recommended 13.f4.

13...♘xd7

Carlsen could recapture the knight differently, but after 13...♖xd7 14.♘a4 White might get some initiative.

14.a4 ♘b8! (D)

Very clever! Now the a4-square is taken, so the knight comes back in order to go to c6.



White has a slight lead in development, but that can soon evaporate, so Aronian acted swiftly:

15.e4!? dxe4 16.d5 ♘d7!

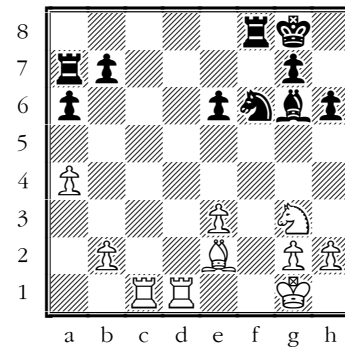
Back to that square again!

17.♕e3 ♕c5? Black would have no problem after 17...♘c5. Now White gets the initiative:

18.♘xe4! ♕xe3

Or 18...♕xe4 19.dxe6 b6 20.♖fd1↑.

19.♖xe3 ♖b6 20.♘g3 ♖xe3 21.fxe3 ♕g6 22.dxe6 fxe6 23.♖fd1 ♘f6 (D)



It's time to take stock. White's rooks are better placed than their counterparts and that gives him an edge. Also, White's bishop can be better than Black's as it can attack weaknesses on b7 and e6.

24.♖d6 ♕f7 25.♕f3?!

GM Landa recommended 25.a5!, fixing Black's weaknesses on the queenside and move the pawn from a4, where it can be attacked later. Indeed, that move would make Black's life very difficult.

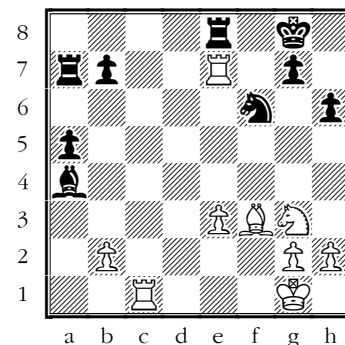
25...a5!

Magnus did not give Levon a chance to correct his mistake! White is still better, but now Black has some counter-chances as he can attack the a4-pawn. In such endgames there is always a danger that White's advantage will fizzle out – that Black will escape with a draw in a rook endgame a pawn down, etc.

26.♖b6 ♕e8! 27.♖xe6

In the case of 27.b3 ♕c6 Black would have good chances of escaping too: 28.♕xc6 bxc6 29.♖bxc6 ♖b8 30.♖xe6 ♖xb3. Taking on c6 with another rook is no better – 29.♖cxc6 ♘d5 30.♖b5 ♖af7 31.h3 ♖f2=.

27...♕xa4 28.♖e7 ♖e8 (D)

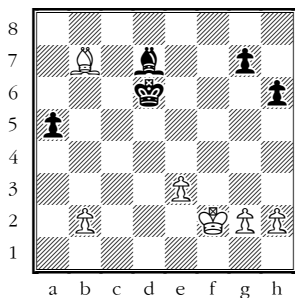


29. ♖f5

In the case of 29. ♖cc7 Black could play 29... ♖xe7 30. ♖xe7 ♘d7 31. ♖h5 ♜f8 32. ♖xg7 b5 33. ♖g3 ♖xh5 34. ♖xh5 a4 and he is fine.

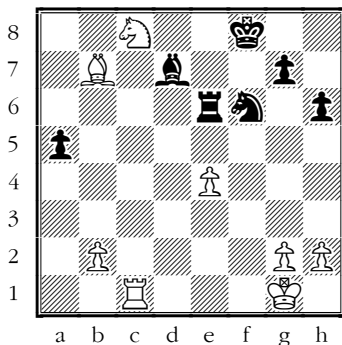
29... ♖xe7 30. ♖xe7+ ♜f8 31. ♖c8

White could try 31. ♖c7!?, but after 31... ♘d7 32. ♖d5 ♖xd5 33. ♖xd5 ♜e8! (the line 33... ♜e7 34. ♖c6 ♜d6 35. ♖xd7+ ♜xc6 36. ♖xg7 looks risky for Black.) 34. ♖xb7 ♖xb7 35. ♖xb7 ♜e7 36. ♜f2 ♜d6 (D)



I doubt that White can realise his extra pawn – it will be firmly blocked by the enemy king on e5.

31... ♖a6 32. ♖xb7 ♖e6 33. e4 ♘d7 (D)



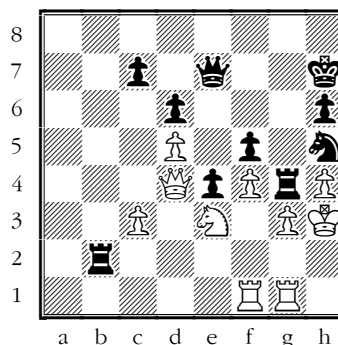
Black is out of the woods now.
**34. ♖c5 ♖xe4 35. ♖xa5 ♖xc8
36. ♖xc8 ♖c6 37. ♖f5+ ♖f6 38. ♖b7
♖b6 39. ♖f3 ♖xb2 1/2-1/2**



Solution to our Quiz:

A. Hunt (2388) – Galdunts (2473)

Gold Coast Open (9), 15.06.2000



**47... ♖xh4+!! 48. gxh4 ♜xh4+
49. ♜xh4 ♖h2# 0-1**

Contact information. Have some comments about Chess Today? [E-mail us](mailto:ababurin@iol.ie) – we appreciate your feedback! **Chess Today** is published by Alexander Baburin, 3 Eagle Hill, Blackrock, Co. Dublin, Ireland. Tel: (353-1) 278-2276. E-mail: ababurin@iol.ie Website: <http://www.chesstoday.net> Editors: GMs Baburin, Scherbakov and Golubev. Technical editors: Graham Brown, Ivan Baburin and Ralph Marconi.

Chess Today is copyright 2000–2011 by Alexander Baburin and protected intellectual property under the International Copyright convention. Subscribers are allowed to non-commercially distribute copies of Chess Today at their chess club, chess tournaments and via e-mail (on an occasional basis). Any other use and distribution (reproduction, via print, electronic format, or in any form whatsoever), as well as posting on the Web, is strictly prohibited without express written permission.